

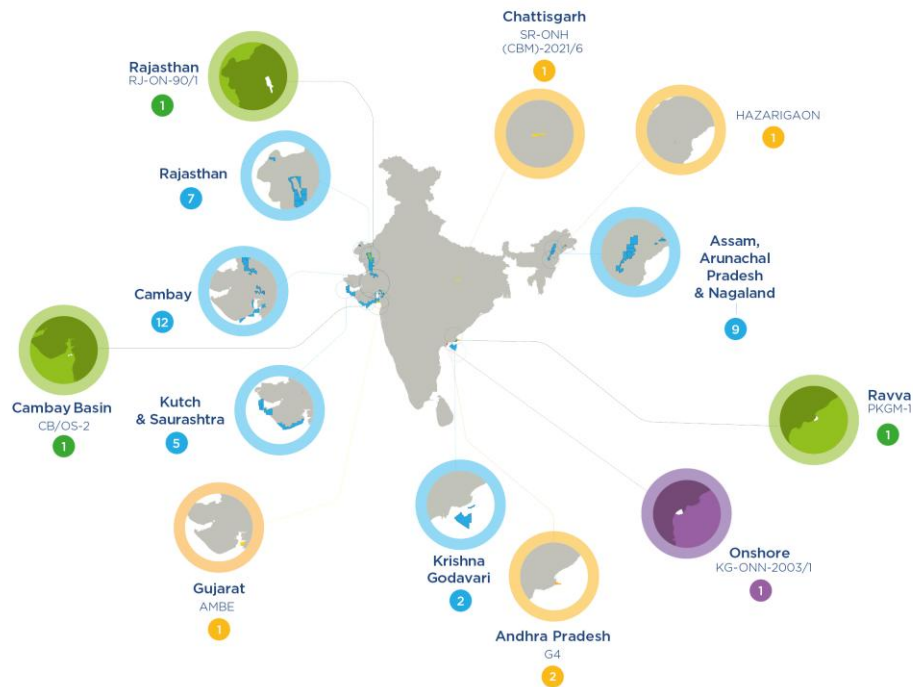


# Vedanta Oil & Gas

Fueling India's Growth



# Blocks Across Basins with Mix of Onshore & Offshore



Largest private oil & gas acreage holder in the country **44 blocks, Acreage > 47,000 sq. km.**

OALP Blocks 35	DSF & CBM Blocks 9	Producing Operated Blocks 3	Producing Non-operated Block 1
-------------------	-----------------------	--------------------------------	-----------------------------------

\*Block boundaries are for graphical representation only.

\*\*Subject to pending approvals. For more details, visit our website.

**44 Blocks**  
(4 PSC, 35 OALP, 4 DSF, 1 CBM)

**Acreage of >47,000 sq.km**

**Rich Resource Potential<sup>2</sup>**  
**2.9 Bnboe**

**High-Margin Production<sup>1</sup> & EBITDA (FY27)**  
**100 kboepd | \$476 Mn**

**We aspire to contribute more than 50% of India's oil production by harnessing our assets, people, technology, and partnerships, while ensuring safe, sustainable, and responsible operations.**

# A Resilient Resource Base Driving Value

## Proven R&R

Rajasthan (RJ-ON-90/1)

Core engine

**1,085**

mmboe (82% of total R&R)

Mangla (Base + ASP) **334**

Satellite – RJS **152**

Mangla BH (Tight Oil) **144**

Bhagyam (Base + ASP) **114**

Aishwarya (Base + ASP) **93**

Raag Deep Gas **51**

Others (4 fields) **197**

East Coast & DW

**147**

mmboe

West Coast

**46**

mmboe

North-East

**9**

mmboe

Misc (D-25, Durga)

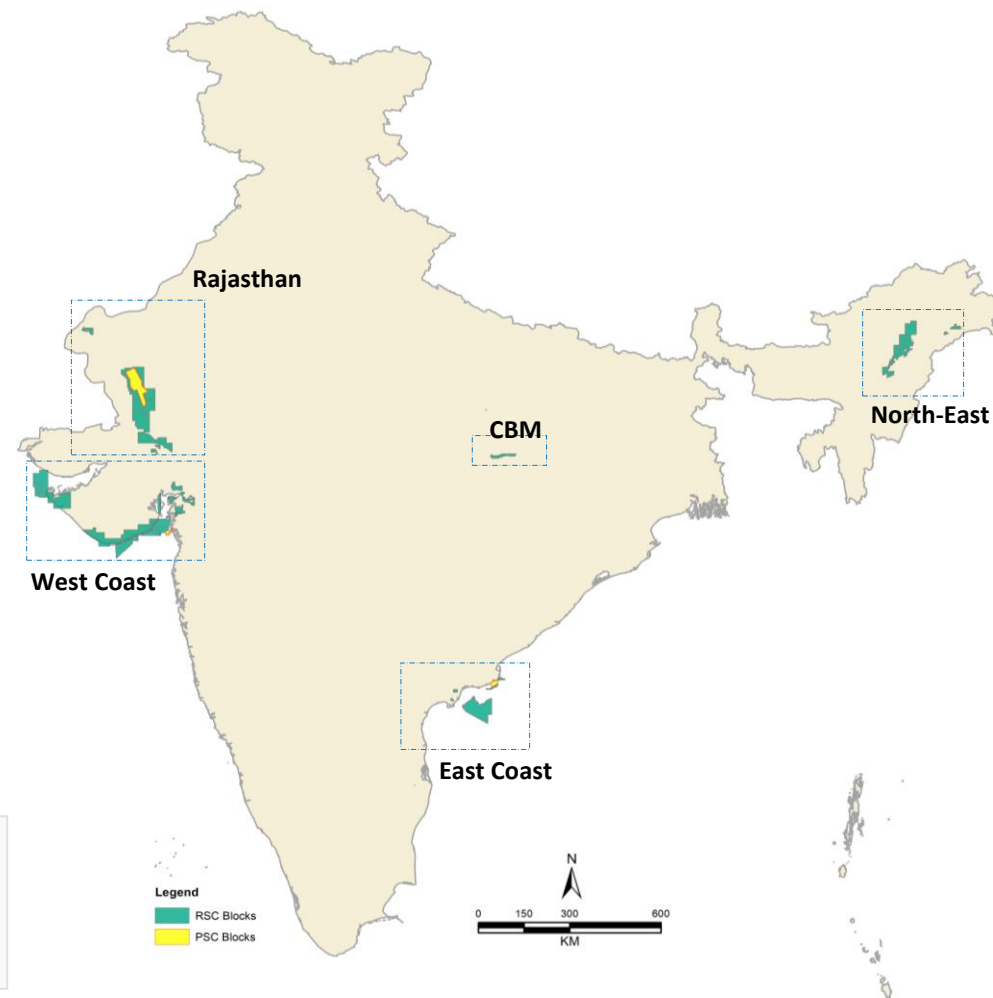
**34**

mmboe

Total proven R&R

**1,321 mmboe**

## 1.3 Bnboe+ Platform Across Core and Emerging Basins



# Value Creation through its 6 Business Units

## Creating Value



### 2X Production

80 → 150+ kboepd



### 1.3 Bnboe R&R

Huge Upside Potential with 2.9 bnboe 2U



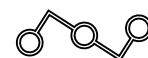
### Bringing Cost Efficiency

\$16.5/bbl → \$10–\$13/bbl



## 6 Distinct Value Creation Model

Business Unit		Value Creation Theme
RJ North		ASP led Recovery & Tight Oil Growth
RJ South		Gas Expansion with Shale Exploration
East Coast		Ravva Exploration
West Coast		New Asset Ambe led Development and others
North-East		New Exploration
Deepwater		KG Basin Exploration



Six distinct engines. One value framework  
All driving towards More Production & More Reserves

# Rajasthan North - Converting Resources to Barrels

## Production FY27



### Production

55 kboepd

## What is Different Now

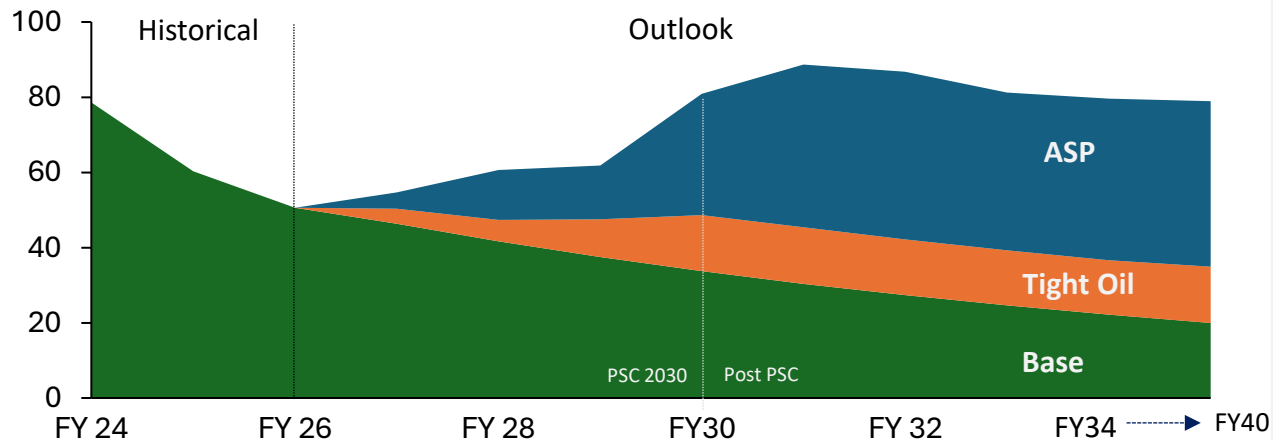
- **Technology** led production enhancement with
  - Targeted workovers
  - Sidetracks
  - Well interventions

## Capital Expenditure FY27



Capex \$214 Mn

## Production Trajectory



## Reserves Addition till FY30

Total R&R

807  
mmboe



Resource to Reserves

200-300  
mmboe

## Target Recovery Factor

Current 30 → 60%

## Why Outlook is Stronger

- Improved subsurface visibility → better well outcomes
- Upfront ASP investment unlocking higher recovery
- Execution certainty through proven end-to-end partners

## Key Levers Driving Growth

Lever	Status	Value Addition	Volume Impact FY 27   FY30   FY 35
ASP	Pilot Proven Scale-up Underway	Increases Mangala Recovery 41% → >60%	3   30   40
Tight Oil	Producing 8 kboepd Planning Recovery Upside	Potentially adds 100-200 mmboe Reserves	4   13   15

**Long-life asset with 15–20 years of production visibility**

# Rajasthan South – Transforming into Multi Field Gas Growth Hub

## Production FY27



### Production

20 kboepd

## Strategic Advantage

- Transition from production-led to exploration-led value creation
- Deep Gas emerges as primary growth engine
- Satellite provide low risk near term growth

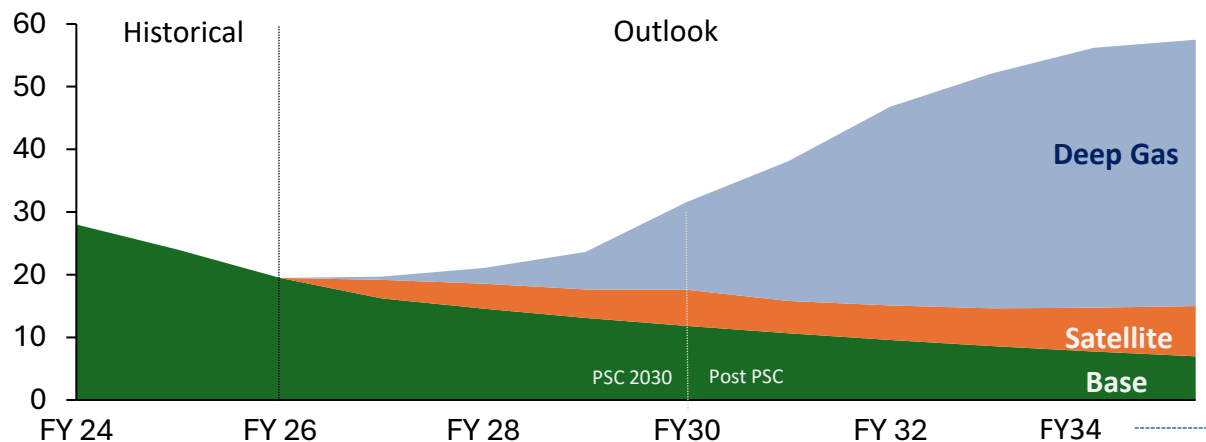
## Capital Expenditure FY27



### Capex

\$133 Mn

## Production Trajectory



## Key Levers Driving Growth

Lever	Status	Value Addition	Volume Impact		
			FY 27	FY30	FY 35
<b>Recovery Uplift</b>	Well Drilling : Oct'26 Scale up underway	Increases Recovery	-	-	-
<b>Satellite Development</b>	Producing 4 kboepd Planned Recovery Enhancement	Potentially add 30 mmboe Reserves	2	6	8
<b>Deep Gas (+ Other Exploration)</b>	Exploration Drilling Ongoing	Major contributor to future production & reserves growth	1	13	42

**Deep Gas, Satellite & Recovery creating significant running room for next 15-20 years**

## Future Resource Opportunity



Current R&R  
**278 mmboe**



Deep Gas Potential(2U)  
**300 mmboe**

**2x Resource Expansion Potential**

## Why we Believe

- Mobilized Global Drilling Partner for Deep Gas
- Existing Infrastructure lowers development cost
- Experienced Subsurface Experts deployed
- First Well Flowback : Jun'26

# Coastal West – Develop, Explore and Expand

## FY 27 Plan



**Production**  
10 kboepd

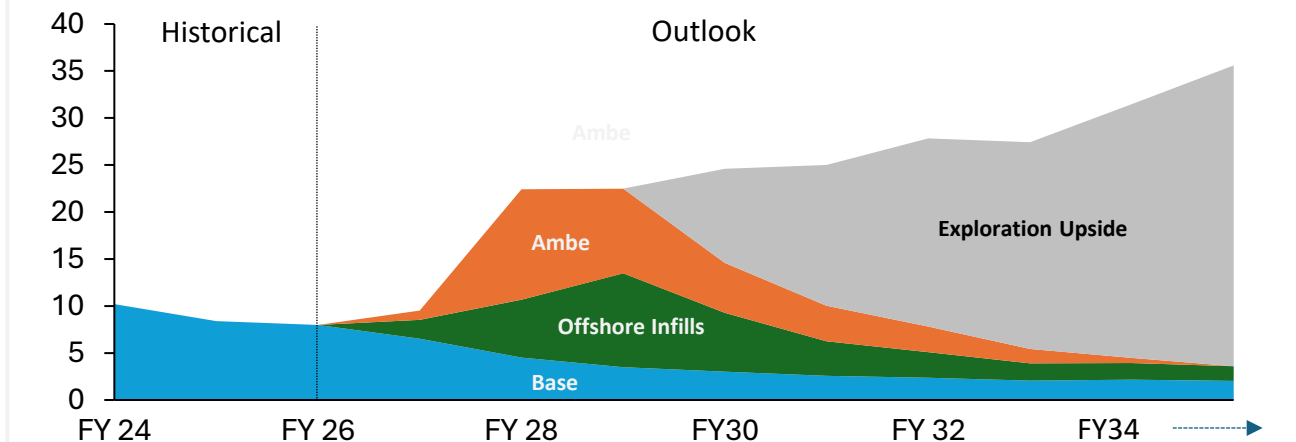


**Capex**  
\$156 Mn

## Why Coastal West Matters

- Cambay Field Producing from > 25 years
- Ambe : Discovery to Production
- Entry into New acreage (OALP and Greater Ambe) with Large Upside
- Leveraging Global Partner capability for End-to-End Development

## Production Trajectory



## Future Resource Opportunity



Current R&R  
**46 mmboe**



2U Resource Potential  
**500 mmboe**

**Providing Significant Upside**

## Key Levers Driving Growth

### Recovery Uplift



Mobilized  
Global  
Subsurface  
experts



New Cambay  
Infills



Incremental  
Waterflood led  
recovery



Adding R&R of  
12 mmboe

### Ambe – Field development



Deployed novel  
CSP Technology  
for faster  
execution and  
low cost



Discovery  
Jan'26



First Gas  
Q4 FY27



2P Reserves  
12mmboe

### Exploration Upside



Exploration  
upside across  
Greater Ambe  
& OALP IX  
blocks



Acreage  
~19000 sq Km



2U Potential  
500 mmboe



Aspiring new  
acreges with  
OLAP X & XI  
rounds

**Key Takeaway : Large 2U Resource Potential provides long runaway for future Growth**

# Coastal East – Developing Today and Exploring New Horizons

## FY 27 Plan



**Production**  
10 kboepd

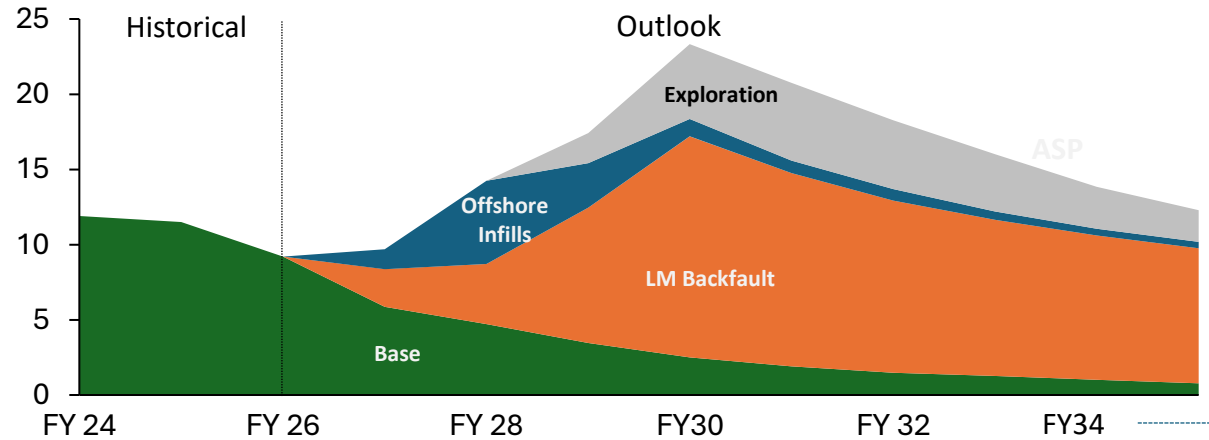


**Capex**  
\$93 Mn

## Strong Outlook

- Ravva Field Producing from > 3 decades
- Significant Exploration Potential across Existing and nearby acreage
- Accelerated OALP & DSF Monetization utilizing Ravva synergies
- Improved subsurface visibility and better well outcomes

## Production Trajectory



## Future Resource Opportunity



Current R&R  
**147** mmboe



2U Resource Potential  
**350** mmboe

**3x Resource Expansion Potential**

## Key Levers Driving Growth

### LM Backfault



Accessing Offshore Reservoir through Onshore Location (ERD)



Drilling in Progress



Production Potential >10 kboepd



Potentially adds R&R of 40 mmboe

### Offshore Infills



Leveraging Global Experts and Partners



Drilling in Q3 FY27



First Oil in Q4 FY27



Production Potential 7-10 kboepd

### Exploration Upside



Exploration upside across Ravva, Greater Ravva & G4



Acreage ~1000 sq Km



2U Potential 350 mmboe



Aspiring new acreages with OLAP X & XI rounds

**Key Takeaway : Large 2U Resource Potential provides long runway for future Growth**

# North-East- Exploration Focused, Large Acreage & Significant Upside

## FY 27 Plan



### Production

7 kboepd



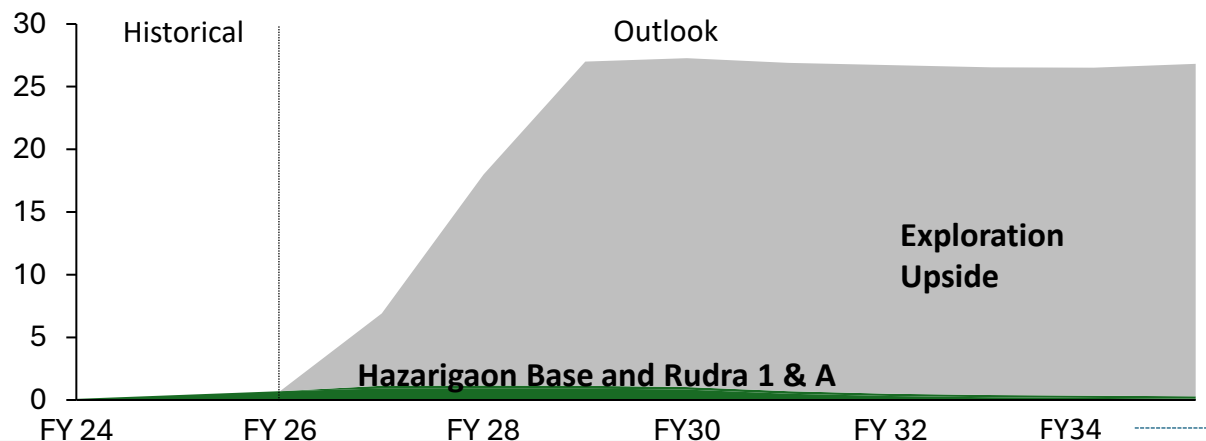
### Capex

\$93 Mn

## Cairn Footprint

- Existing production from Hazarigaon field
- Rudra discovery validates basin potential
- SP-1 is the next key catalyst
- SP-1 site prepared and ready to drill first well

## Production Trajectory



## Exploration Value Drivers

### Large acreage position



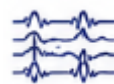
Contiguous position across 10 blocks capturing extensions of proven fields and discoveries

### Strong prospect inventory



Multiple high impact prospects identified across different play extensions

### Robust technical foundation



Extensive 2D & 3D seismic supporting lead maturation and de-risking

### Exploration momentum



SP1 exploration well spud in July'26

## Asset Highlight



**Current R&R**  
~10 mmboe



**Exploration Upside (2U)**  
600 mmboe



**Acreage**  
~12,000 sq Km operated



Extensive **Subsurface coverage**  
2D: ~6400 sq Km  
3D: ~5000 sq Km

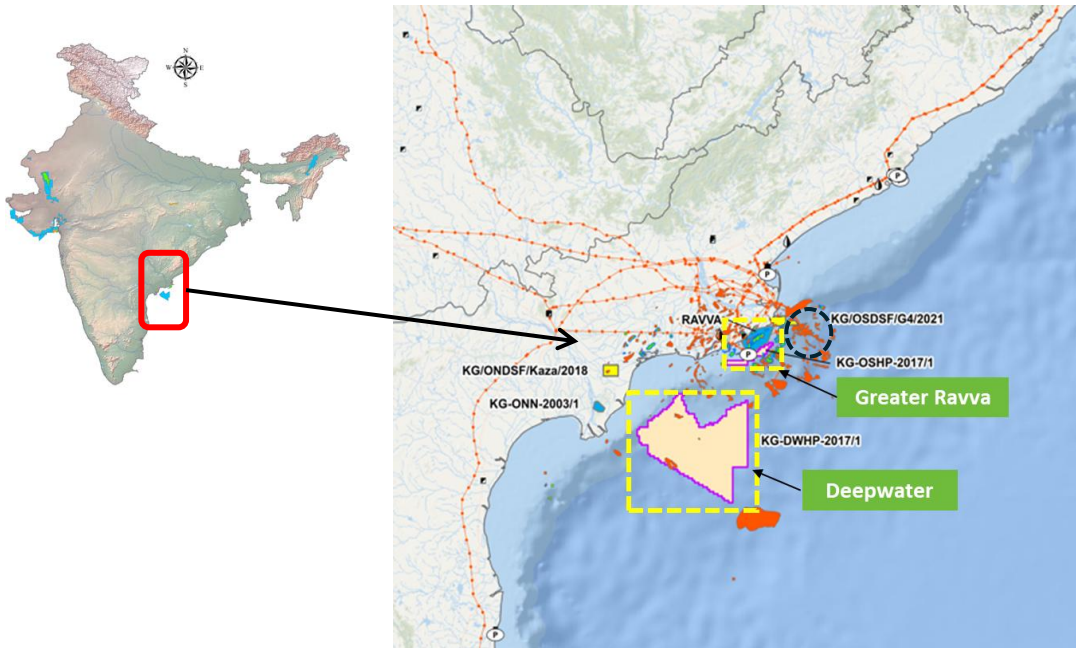
## Execution Excellence

- Mobilized Global Subsurface Expert for Prospects De-risking
- Execution planned through End to End Model with Proven Partners

**Key Takeaway :With 10 blocks, strong Prospects Inventory and ongoing Exploration; Northeast is positioned to become a key long term Growth Pillar**

# Deepwater: A Material Offshore Growth Opportunity

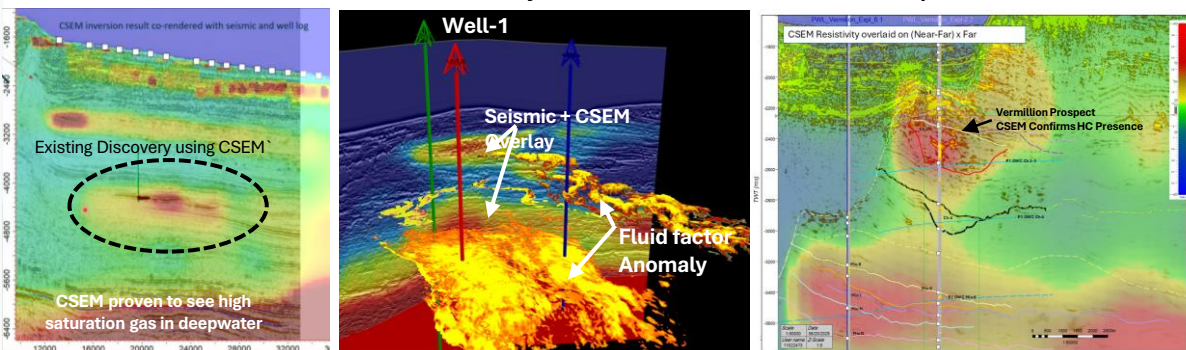
Multi-TCF Gas, Oil upside, Enabled by Advanced imaging



## Deepwater: KG-DWHP-2017/1 (OALP-1 block)

- Proven petroleum system with 4 biogenic gas discoveries with 2U Resource Potential of 1 Bnboe
- Multi-TCF upside (flagship ~3 TCF) with high POS
- Potential to produce 180-200 KBOEPD
- Advanced 3D seismic & CSEM de-risking
- 2–5 E&A wells planned, Global Partner locked-in
- Parallel development engineering by global experts
- Deeper Oil potential provides long term growth

CSEM Confirms Hydrocarbon Presence at Vermillion Prospect EUR of ~500 mmboe





Thank you